



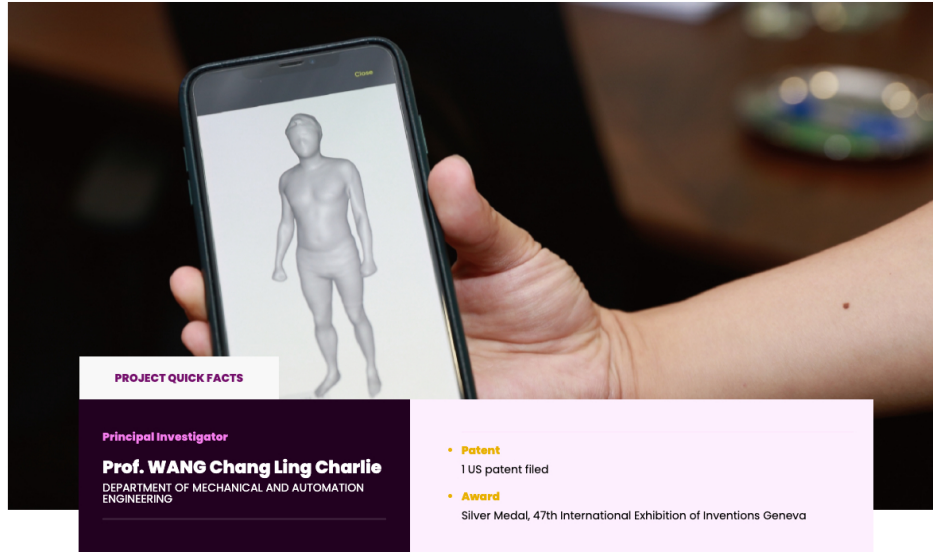
Shape Driven Technology

#AI

#MobileApp

#Automation

#2019



Traditional manufacturing of clothes and shoes requires pre-production of various sizes of products, which cannot match every individual's body shape. We provide digital human oriented solutions for intelligent design and advanced manufacturing to achieve the upgrade to Industry 4.0. By our patented AI-enabled Shape Driven Technology, we can change the current operation mode of the manufacturing industry to realize the direct customer-to-manufacturer (C2M) solution.

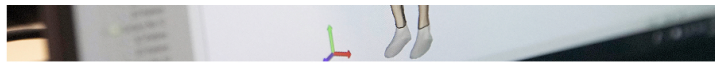
Uniqueness and Competitive Advantages:

- Our solution is equipped with the mature fast scanning, the big data and deep learning driven AI, and the digital knitting technology.
- A simple, fast and low cost system with intelligent design and auto-transfer technology is developed to fabricate customised clothes and shoes, and in the future, wearable products in all kinds of styles.
- Production time for a tailor-made cloth can be greatly reduced from 2-3 weeks to 2-3 days if the manufacturer is equipped with digital knitting machines.



A mobile APP of AI generating 3D human model





3D human model with pre-designed wetsuit layout



2D flattened layout for final cutting and wiring



3D ultra-fitted wetsuit

DO YOU LIKE OUR PROJECT?

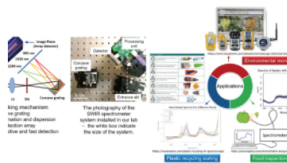
[f Share it](#)

[in Share it](#)

[Contact us](#)

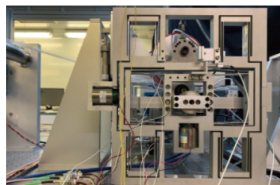
MORE TO EXPLORE

[All projects >](#)



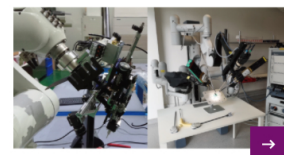
Robotics and Advanced Manufacturing
Handheld High-Resolution Short-Wave Infrared...

[Read more >](#)



Robotics and Advanced Manufacturing
Deep Learning for Next-Generation Precision Machine...

[Read more >](#)



Robotics and Advanced Manufacturing
Advanced Vision and Sensing System for Next-Generation...

[Read more >](#)



Information and Communication Technologies
Virtual Tour of Colonial Architecture in Hong Kong

[Read more >](#)

